



M 52
M 52 D
Active
Control Monitors



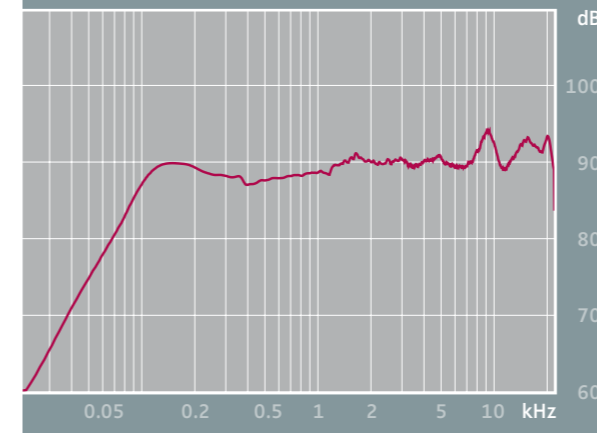
The M 52 / M 52 D are the reference monitors of choice for many small studios and OB vans across the world. Where space is at a premium, the M 52 and M 52 D offers the distinct advantage of being extremely compact, taking up a volume of only 1.8 liters (4 3/4" x 6 7/8" x 4 5/8" / 120 x 173 x 116 mm). It offers a flat frequency response, making it ideal as either a control monitor in live broadcast or as a mix monitor in the smaller recording studio. The monitor can be powered from a 12 V to 20 V battery thereby opening up many new applications in small broadcast vans or video editing stations. As a multimedia monitor, the versatile M 52 is ideal for both permanent and mobile applications. The driver is magnetically shielded so it can be installed next to TV screens and hard-disk drives.



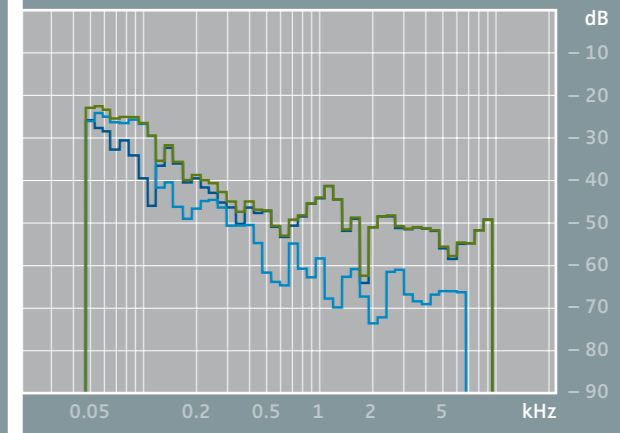
M 52 Active Control Monitor

- Director's control monitor
- "TV speaker" reference monitor in studio
- Reference monitor for broadcast vans
- High quality and robust line checker
- Low-distortion bass reproduction from long excursion driver
- Clear high-frequency reproduction
- Compact size with convenient controls located on the front panel
- Transformer-balanced XLR connector
- Connector for use with 12 V to 20 V DC batteries
- Switched-mode power supply for 80 – 250 V AC mains power input

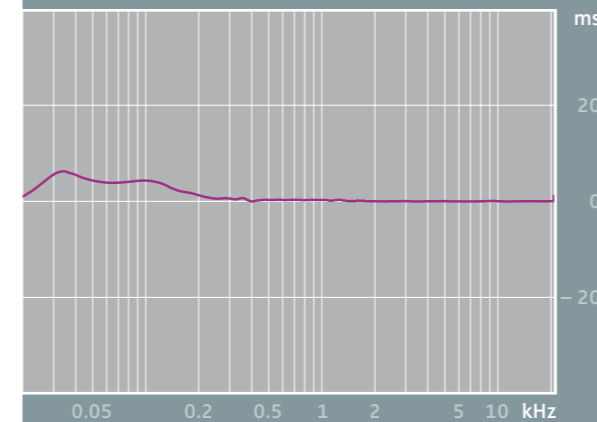
Frequency response



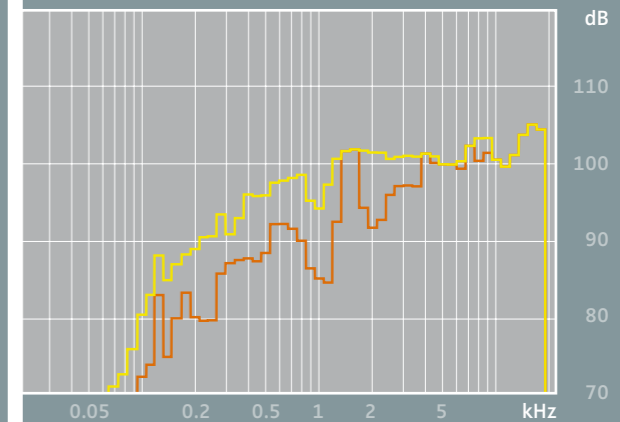
THD at 90 dB SPL at 1 m



Group delay



Max. SPL at 1 m at 1% and 3% THD

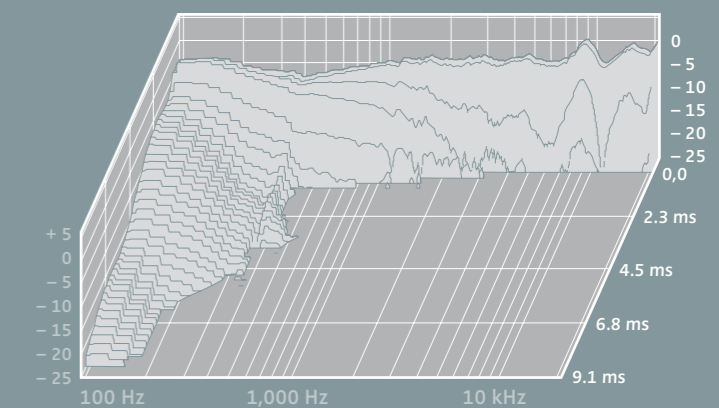


M 52 D Digital Active Control Monitor

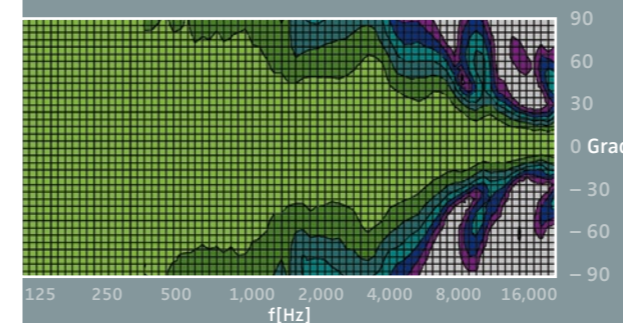
Acoustic and mechanical properties same as the M 52.

- Analog and digital inputs
- Measuring monitor for evaluating digital inputs
- Additional XLR and BNC connectors for AES/EBU or AES-3id signals
- Convenient channel-assignment switch on front panel
- Easy daisy chaining using the BNC or XLR connectors

Cumulative spectral decay



Horizontal directivity



Vertical directivity

